



Mouse anti FLAG-Tag (DYKDDDDK) Monoclonal Antibody

Alternative Name(s): DYKDDDDK

Order Information

- **Description:** FLAG-Tag (DYKDDDDK)
- **Catalogue:** 603-870
- **Lot:** See label
- **Size:** 100ug/200ul
- **Host:** Mouse
- **Clone:** ZY428
- **Application:** WB, IP, IF
- **Reactivity:** Hu

ANTIGEN PREPARATION

A synthetic peptide DYKDDDDK

BACKGROUND

FLAG-tag is a polypeptide that has the sequence motif DYKDDDDK. It is one of the most specific tags. FLAG-tag is an artificial antigen to which specific, high affinity monoclonal antibodies have been developed. Many oligo peptides or tag proteins are widely used as a tag to monitor the protein expression, such as FLAG, c-Myc, E-tag, His-tag, GFP, GST, and etc. These tag antibodies provide tools to localize gene products in a variety of cell types to study the topology of proteins, and protein complexes, and to identify associated proteins. In addition, this antibody allows characterizing of newly identified, lowing abundance or poorly immunogenic proteins when protein specific antibodies are not available. The FLAG antibody can be used to detect the FLAG tagged fusion proteins. It can be used in many different assays to simplify the labeling and detection of proteins, including antibodies. FLAG-Tag can be also utilized in affinity chromatography for protein purification.

PURIFICATION

The mouse IgG is purified by Protein A-Affinity Chromatography according to Isotyping

FORMULATION

This affinity purified antibody is supplied in sterile Phosphatebuffered saline (pH7.2) containing antibody stabilizer

SPECIFICITY

This antibody recognizes FLAG-Tag (DYKDDDDK) tag protein.

STORAGE

The antibodies are stable for 24 months from date of receipt when stored at -20°C to -70°C . The antibodies can be stored at 2°C - 8°C for three month without detectable loss of activity. Avoid repeated freezing-thawing cycles.

APPLICATIONS/SUGGESTED WORKING DILUTIONS*

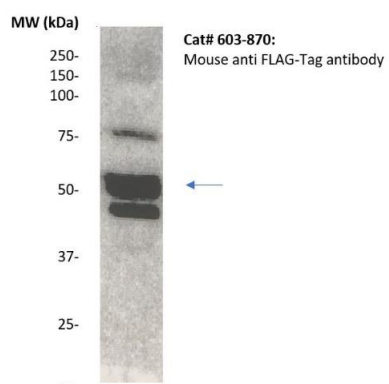
- Western Blot: 0.1-1 $\mu\text{g/ml}$
- ELISA: 0.01-0.1 $\mu\text{g/ml}$
- Immunoprecipitation: 2-5 $\mu\text{g/ml}$
- IHC: 2-10 $\mu\text{g/ml}$
- Flow cytometry: Not tested
- Molecular Weight: nan
- Positive Control: Kidney Tissue
- Cellular Location: Cell Membrane

*Optimal dilutions should be determined by researchers for the specific applications.

FOR RESEARCH USE ONLY.

AbboMax, Inc 2528 Qume Drive, Suite 8, San Jose, California 95131, USA
1 408-573-1898 (Tel). 1 408-573-1858 (Fax). www.abbomax.com info@abbomax.com

DATA ATTACHMENTS



Western Blot: The Flag-tagged fusion protein (10 ug/lane) immunoblotted by Mouse anti-Flag antibody (Cat# 603-880) at 1:500. Observed a major immunoreactive band for the Flag-tagged protein.

REFERENCES

FOR RESEARCH USE ONLY.